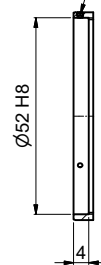


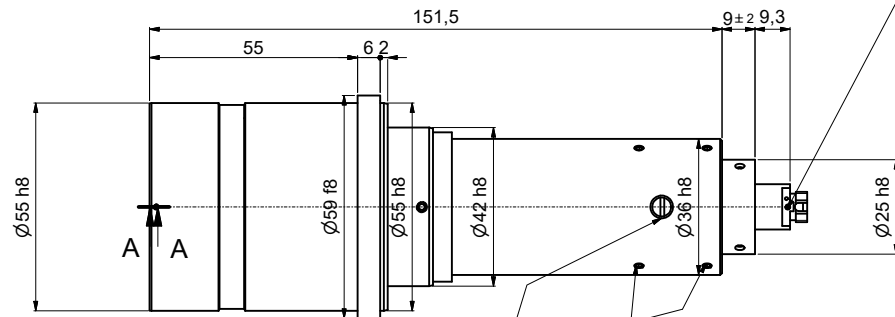
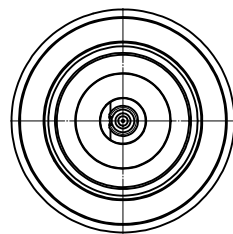


A-A

Clamping screw for locking of lens attachments (3x120°)



! Pin screw for additional locking of the fiber ferrule:  
 - before pulling the FC-connector:  
 unlock the pin screw.  
 - before inserting the FC-connector:  
 make sure the ferrule receptacle is not blocked  
 by the pin screw !



adjustment of focus setting  
 using eccentric-key 55EX-5 ③

Stop screw (2x/3x120°) for locking  
 optics position  
 using hex key 1.5mm  
 50HD-15 ①

Tools for assembly and adjustment

hex-key  
 size 1.5mm  
 50HD-15

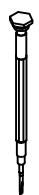
screw driver  
 size 1.2mm  
 9D-12

eccentric-key  
 55EX-5

①



②



③



! Don't touch any other screws !

		Allgemein- toleranz ISO 2768 - f		Maßstab: 2:1	
		Datum		Name	
		18.05.2016		Tp	
		Gepr.			
		Norm			
		Schäfer&Kirchhoff		Blatt	
		OPTO-SENSORIK UND MESSTECHNIK		A2	
		9802-4150-0029		Blatt: 1	
Zust.	Änderungen	Datum	Name	Datei: 980241500029.idw	Model: 980241500029.iam