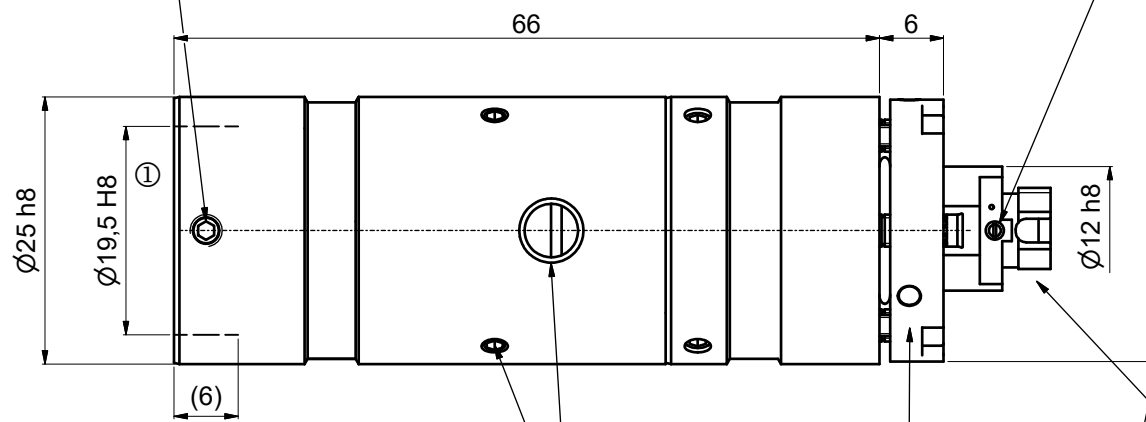
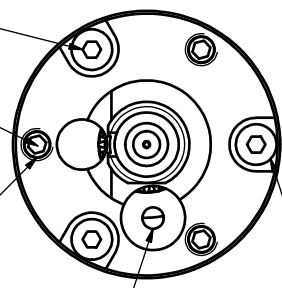


! Pin screw for additional locking of the fiber ferrule:
 - before pulling the FC-connector:
 unlock the pin screw.
 - before inserting the FC-connector:
 make sure the ferrule receptacle is not blocked
 by the pin screw !



clamp screws
 for accessory optics (3x120°)
 using hex-key size 1.5mm
 50HD-15 ①

Thrust and tension screw (3x120°)
 for tilt adjustment
 with hex key wrench size 1.5mm
 50HD-15 ①



Thrust screw M3 max.torque 50Ncm

Rotation of the quarter wave plate
 with adjustment key ④

Tension screw M2 max.torque 40Ncm

clamp screws for locking optics position (2x120°)
 using hex-key size 1.5mm
 50HD-15 ①

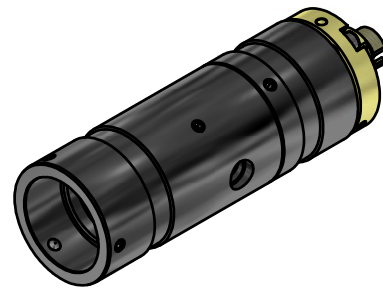
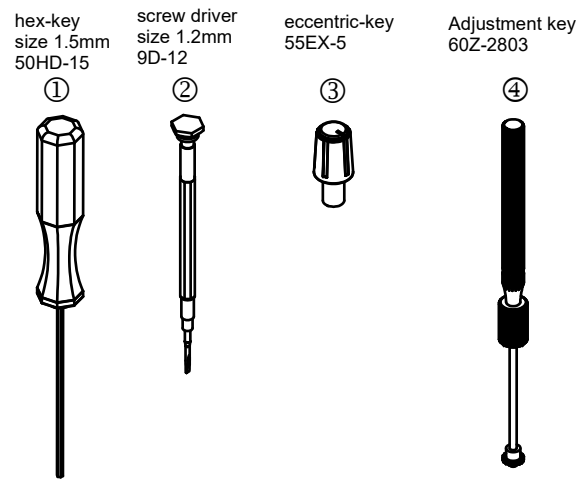
adjustment of focus setting
 using eccentric-key 55EX-5 ③

Fiber receptacle
 type FC-PC

Stop screw (2x120°) for lock/unlock
 of the rotation of the
 quarter wave plate
 with screw driver 1.2mm 9D-12 ②

! Don't touch any other screws !

Tools for assembly and adjustment



Allgemein- toleranz ISO 2768 - f		Maßstab: 2:1	
60FC-Q-0-M60-xx		Fiber collimator f60mm	
Fiber receptacle type FC-Q-0-xx		9803-1223-7400	
Schäfter&Kirchhoff OPTO-SENSORIK UND MESSTECHNIK		Blatt A3	
Datei: 980312237400.idw		Blatt: 2	
Zust.	Änderungen	Datum	Name
Model: 980312237400.iam			