

Thrust and tension screw (3x120°)
for tilt adjustment
with hex key wrench size 1.5mm
50HD-15 ①

clamp screws
for accessory optics (3x120°)
using hex-key size 1.5mm
50HD-15 ①

Thrust screw M3 max.torque 50Ncm

Rotation of the quarter wave plate
with adjustment key ④

Tension screw M2 max.torque 40Ncm

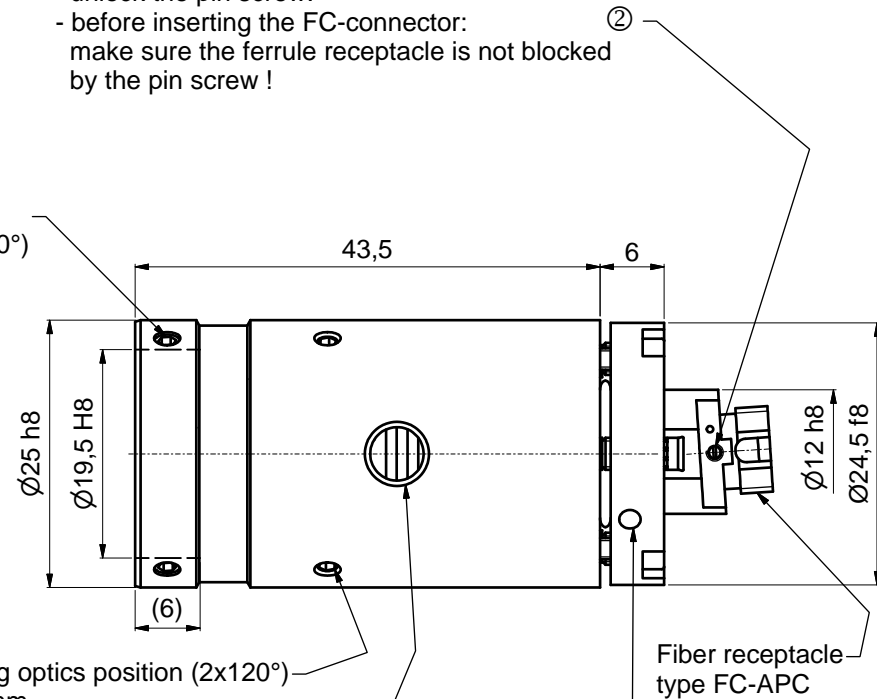
clamp screws for locking optics position (2x120°)
using hex-key size 1.5mm
50HD-15 ①

adjustment of focus setting
using eccentric-key 55EX-5 ③

Stop screw (2x120°) for lock/unlock
of the rotation of the
quarter wave plate
with screw driver 1.2mm 9D-12 ②

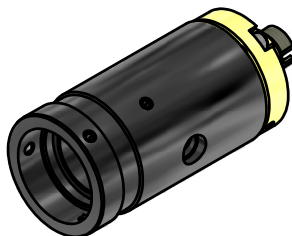
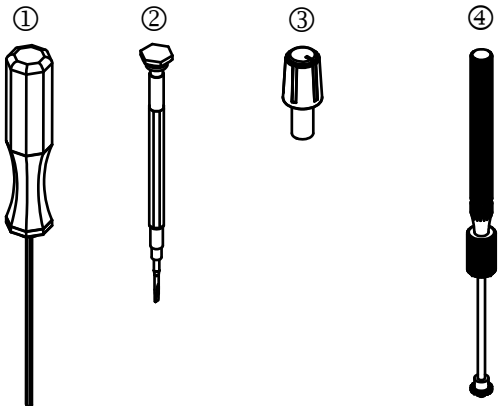
! Don't touch any other screws !

! Pin screw for additional locking of the fiber ferrule:
- before pulling the FC-connector:
unlock the pin screw.
- before inserting the FC-connector:
make sure the ferrule receptacle is not blocked
by the pin screw !



Tools for assembly and adjustment

- hex-key size 1.5mm 50HD-15 ①
- screw driver size 1.2mm 9D-12 ②
- eccentric-key 55EX-5 ③
- Adjustment key 60Z-2303 ④



Allgemeintoleranz ISO 2768 - f		Maßstab: 2:1
60FC-Q-4-M30-24/26/37 60FC-Q-4-M35-xx 60FC-Q-4-M40-xx		
Datum 29.07.2015 Name Tp		Fiber collimator f'30-40mm
Gepr.		
Norm		
Schäfter&Kirchhoff OPTO-SENSORIK UND MESSTECHNIK OPTIK-ENTWICKLUNG/ELEKTRONIK/SORTIERTECHNIK/SOFTWARE		Fiber receptacle type FC-Q-4-xx
Datei: 980312235700.idw		9803-1223-5700
Zust.	Änderungen	Blatt A3
Datum		Blatt 2
Name		Modell: 980312235700.iam