

Thrust and tension screw (3x120°)
for tilt adjustment
with hex key wrench size 1.5mm
50HD-15 ①

clamp screws
for accessory optics (3x120°)
using hex-key size 1.5mm
50HD-15 ①

! Pin screw for additional locking of the fiber ferrule:
- before pulling the FC-connector:
unlock the pin screw.
- before inserting the FC-connector:
make sure the ferrule receptacle is not blocked
by the pin screw !

Thrust scw M3 max.torque 50Ncm

Rotation of the quarter wave plate
with adjustment key ④

Tension scw M2 max.torque 40Ncm

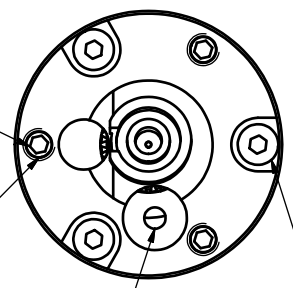
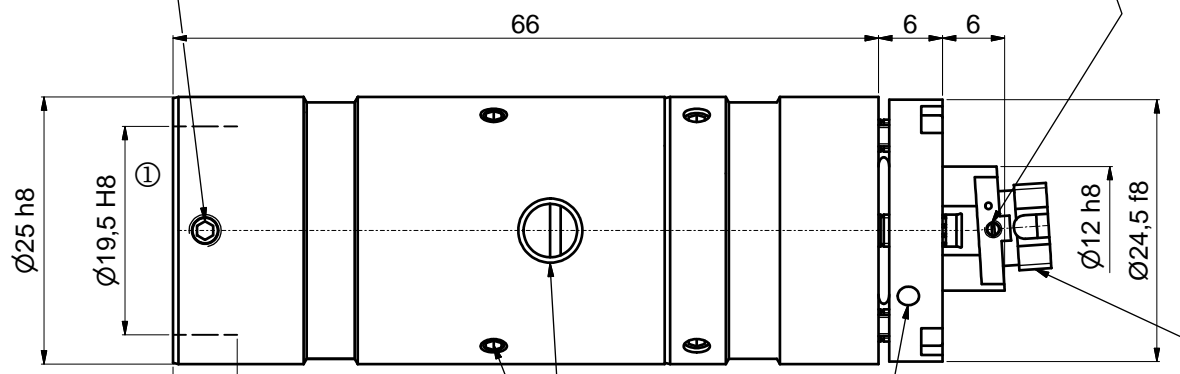
clamp screws for locking optics position (2x120°)
using hex-key size 1.5mm
50HD-15 ①

adjustment of focus setting
using eccentric-key 55EX-5 ③

Fiber receptacle
type FC-APC

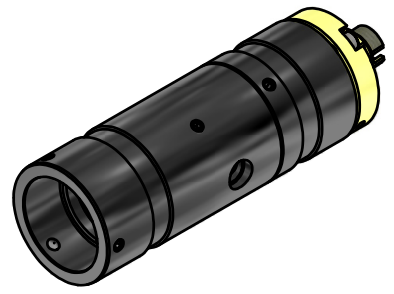
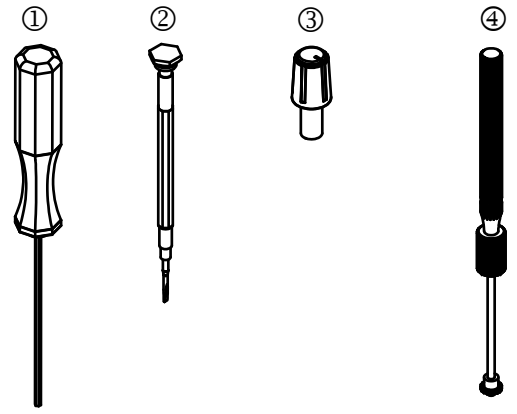
Stop screw (2x120°) for lock/unlock
of the rotation of the
quarter wave plate
with screw driver 1.2mm 9D-12 ②

! Don't touch any other screws !



Tools for assambly and adjustment

- hex-key size 1.5mm 50HD-15 ①
- screw driver size 1.2mm 9D-12 ②
- eccentric-key 55EX-5 ③
- Adjustment key 60Z-2303 ④



Allgemeintoleranz ISO 2768 - f		Maßstab: 2:1	
60FC-Q-4-M60-xx		Fiber collimator f'60mm	
Fiber receptacle type FC-Q-4-xx		9803-1223-5800	
Schäfter&Kirchhoff OPTO-SENSORIK UND MESSTECHNIK OPTIK-ENTWICKLUNG/ELEKTRONIK/SORTECHNIK/SOFTWARE		Blatt A3	
Zust.		Blatt 2	
Änderungen		Datum	
Name		Datei: 980312235800.idw	
Datum		Modell: 980312235800.iam	