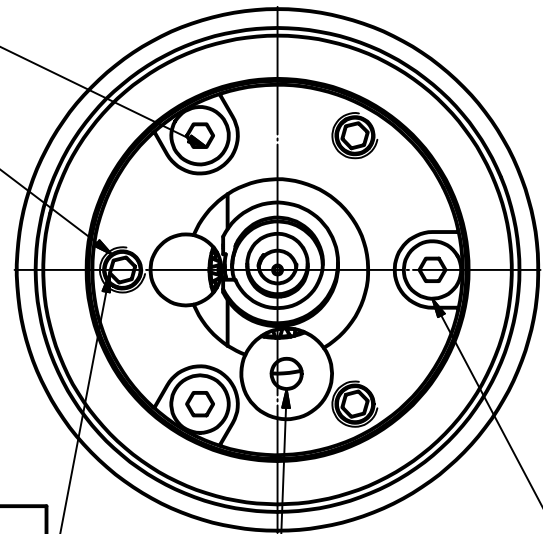


Thrust and tension screw (3x120°)
for tilt adjustment
with hex key wrench size 1.5mm
50HD-15 ①



Thrust screw M3 max.torque 50Ncm

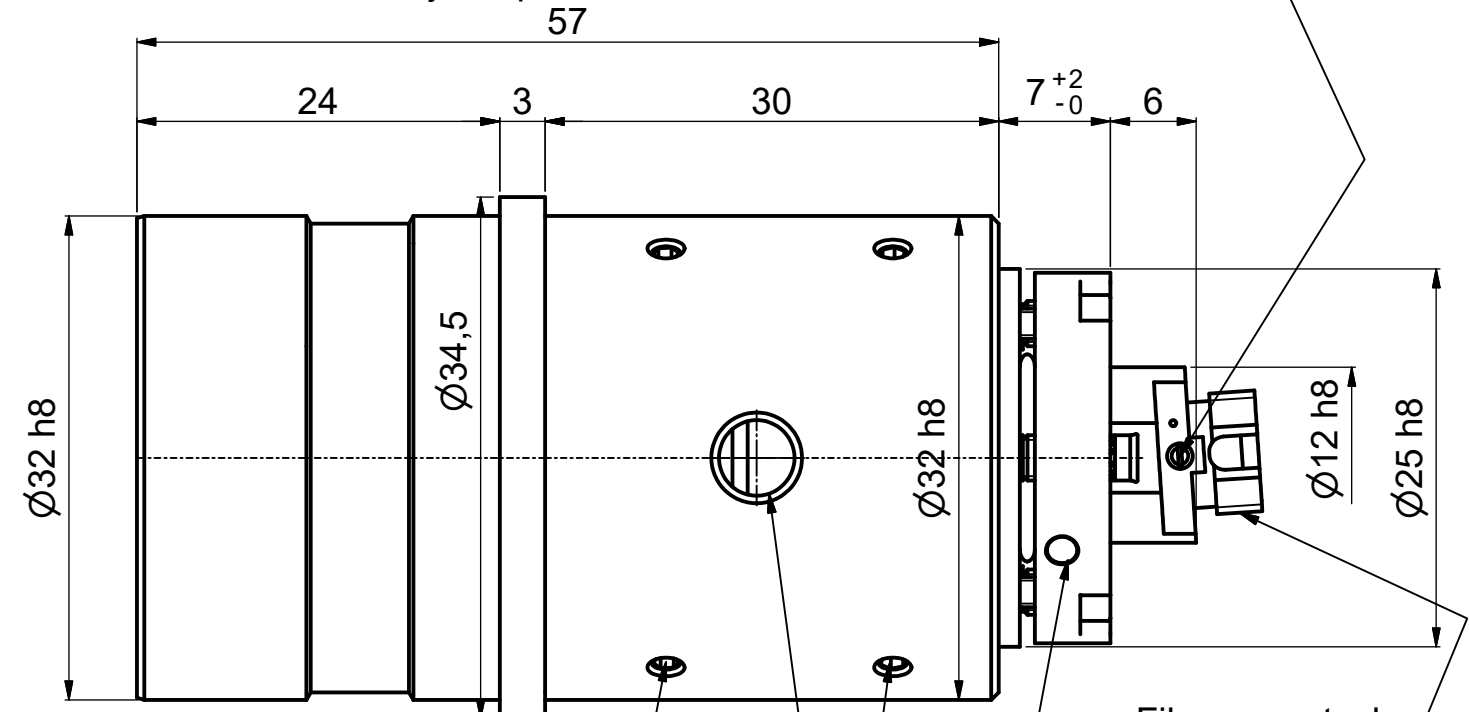
Rotation of the quarter wave plate
with adjustment key ④

Tension screw M2 max.torque 40Ncm

Stop screw (3x120°) for locking
optics position
using hex key 1.5mm
50HD-15 ①

Stop screw (2x120°) for lock/unlock
of the rotation of the
quarter wave plate
with screw driver 1.2mm 9D-12 ②

! Pin screw for additional locking of the fiber ferrule:
- before pulling the FC-connector:
unlock the pin screw.
- before inserting the FC-connector:
make sure the ferrule receptacle is not blocked
by the pin screw !



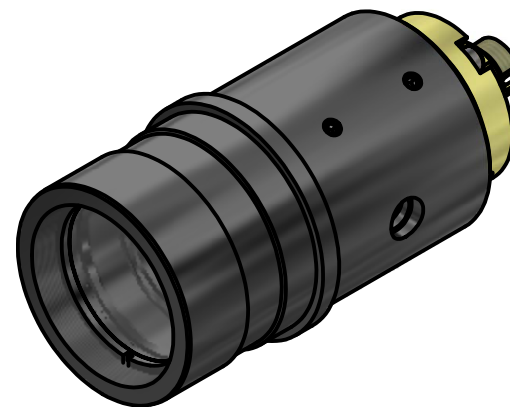
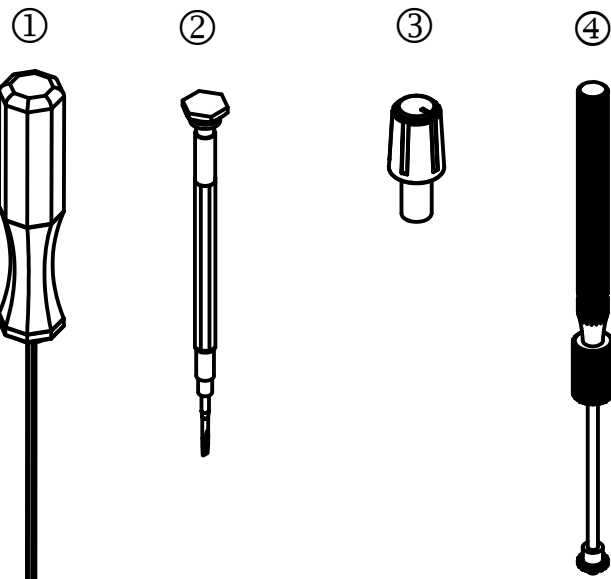
Fiber receptacle
type FC-APC

adjustment of focus setting
using eccentric-key 55EX-5 ③

! Don't touch any other screws !

Tools for assembly and adjustment

hex-key size 1.5mm 50HD-15	screw driver size 1.2mm 9D-12	eccentric-key 55EX-5	Adjustment key 60Z-2803
----------------------------------	-------------------------------------	-------------------------	----------------------------



Allgemein- toleranz ISO 2768 - f		Maßstab: 2:1	
60FC-Q-4-M60L-xx		Fiber collimator f'60	
Fiber receptacle type FC-APC		Blatt A3	
Schäfter&Kirchhoff OPTO-SENSORIK UND MESSTECHNIK OPTIK-ENTWICKLUNG&ELEKTRONIKSENSORTECHNIK&SOFTWARE		Blatt: 1	
Zust.	Änderungen	Datum	Name
Datei: 980241870002.idw		Modell: 980241870002.iam	