

Thrust and tension screw (3x120°)
for tilt adjustment
with hex-key wrench size 1.5mm
50HD-15 ①

clamp screws
for accessory optics (3x120°)
(not included)
using hex-key size 1.5mm
50HD-15 ①

Fiber receptacle
type FC-SMA-905
High Power Connector (5° polish)

Thrust screw M3 max.torque 50Ncm

Tension screw M2 max.torque 40Ncm

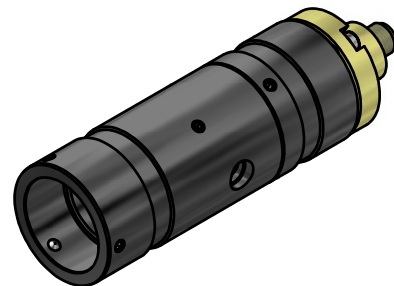
clamp screws for locking optics position (2x120°)
using hex-key size 1.5mm
50HD-15 ①

adjustment of focus setting
using eccentric-key 55EX-5 ②

! Don't touch any other screws !

Tools for assembly and adjustment

hex-key size 1.5mm 50HD-15	eccentric-key 55EX-5
①	②



Dimensions DIN EN ISO 14405	Scale: 2:1	60FC-SMA-T-23-M60-xx	
		Fiber collimator f'60	
		Type FC-SMA-905 High Power Connector (5° polish)	
		Customer Drawing	
		Schäfter+Kirchhoff OPTICS, METROLOGY, AND PHOTONICS	9803-1223-6900
		File: 980312236900.idw	Model: 980312236900.iam
			Size: A3 Page: 1