

Thrust and tension screw (3x120°)  
for tilt adjustment  
with hex key wrench size 1.5mm  
50HD-15 ①

clamp screws  
for accessory optics (3x120°)  
using hex-key size 1.5mm  
50HD-15 ①

! Pin screw for additional locking of the fiber ferrule:  
- before pulling the FC-connector:  
unlock the pin screw.  
- before inserting the FC-connector:  
make sure the ferrule receptacle is not blocked  
by the pin screw !

adjustment of focus setting  
using eccentric-key 55EX-5 ③

Thrust screw M3 max.torque 50Ncm

Tension screw M2 max.torque 40Ncm

clamp screws for locking optics position (2x120°)  
using hex-key size 1.5mm  
50HD-15 ①

Fiber receptacle  
type FC-PC  
(wide key)

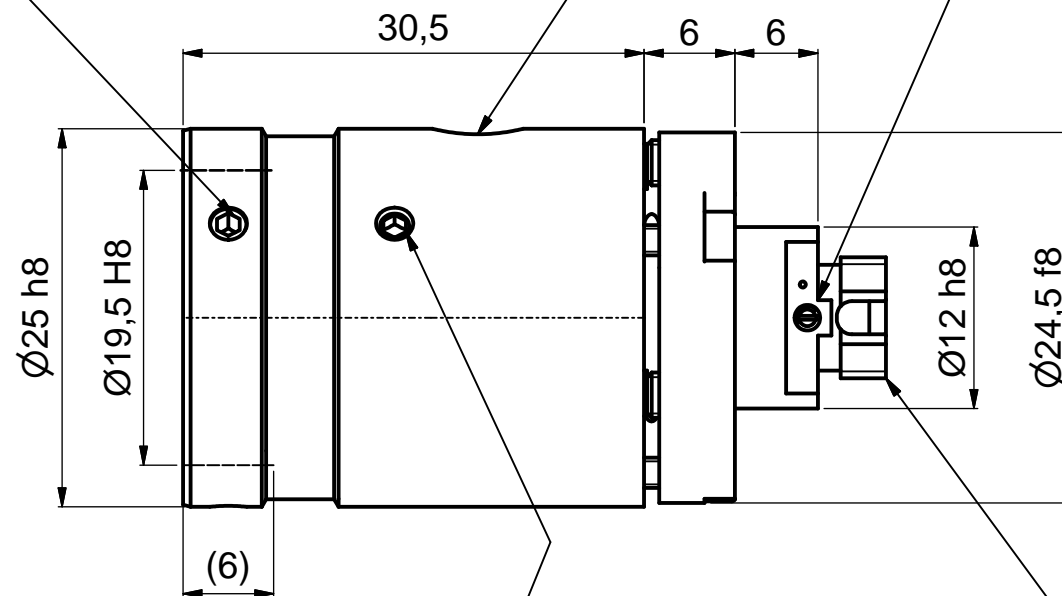
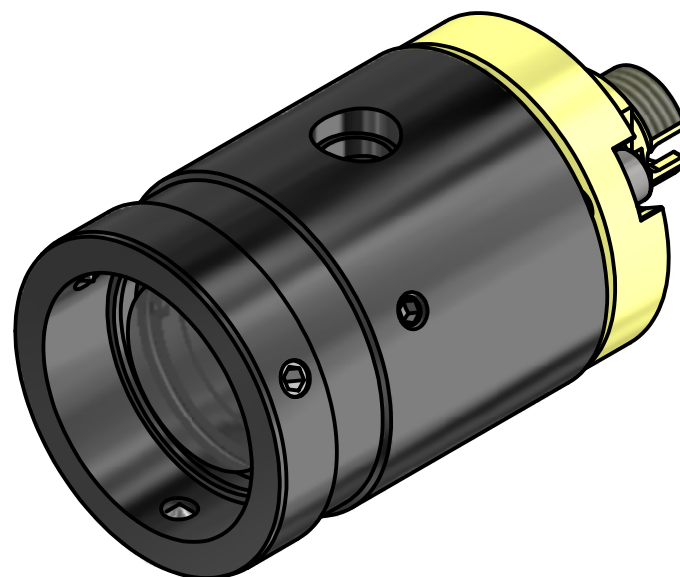
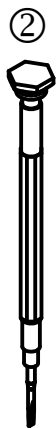
! Don't touch any other screws !

Tools for assembly and adjustment

hex-key  
size 1.5mm  
50HD-15

screw driver  
size 1.2mm  
9D-12

eccentric-key  
55EX-5



Allgemein-toleranz ISO 2768 - f		Maßstab: 2:1	
		60FC-T-0-M20L-xx 60FC-T-0-M25-xx 60FC-T-0-M30-01/02/03/04	
	Datum	Name	
Bearb.	17.03.2017	Tp	
Gepr.			
Norm			
Schäfter&Kirchhoff OPTO-SENSORIK UND MESSTECHNIK OPTIK-ENTWICKLUNG-ELEKTRONIK-SENSORTechnikSOFTWARE			Blatt A3
Datei: 980312236000.idw			Blatt: 2
Zust.	Änderungen	Datum	Name
Datei: 980312236000.idw			Modell: 980312236000.iam

Fiber collimator f'20-30mm

Fiber receptacle type FC-PC

9803-1223-6000