

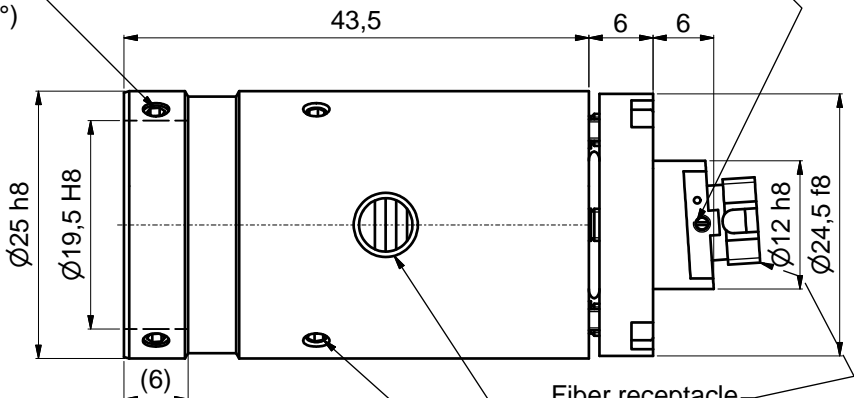
! Pin screw for additional locking of the fiber ferrule:  
 - before pulling the FC-connector:  
 unlock the pin screw.  
 - before inserting the FC-connector:  
 make sure the ferrule receptacle is not blocked  
 by the pin screw !

Thrust and tension screw (3x120°)  
 for tilt adjustment  
 with hex key wrench size 1.5mm  
 50HD-15 ①

clamp screws  
 for accessory optics (3x120°)  
 using hex-key size 1.5mm  
 50HD-15 ①

Thrust screw M3 max.torque 50Ncm

Tension screw M2 max.torque 40Ncm



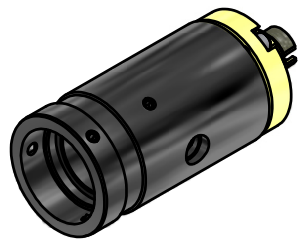
clamp screws for locking optics position (2x120°)  
 using hex-key size 1.5mm  
 50HD-15 ①

adjustment of focus setting  
 using eccentric-key 55EX-5 ③

! Don't touch any other screws !

Tools for assembly and adjustment

hex-key size 1.5mm 50HD-15	screw driver size 1.2mm 9D-12	eccentric-key 55EX-5
①	②	③



Allgemein- toleranz ISO 2768 - f		Maßstab: 2:1
Bearb. 29.07.2015 Gepr. Norm		60FC-T-4-M30-24/26/37 60FC-T-4-M35-xx 60FC-T-4-M40-xx
Datum 29.07.2015 Name Tp		<b>Fiber collimator f'30-40mm</b>
		Fiber receptacle type FC-APC
Schäfter&Kirchhoff OPTO-SENSORIK UND MESSTECHNIK OPTIK-ENTWICKLUNG/ELEKTRONIK/SENSORTECHNIK/SOFTWARE		9803-1223-5100
Zust.	Änderungen	Blatt A3
Datum	Name	Blatt 2
Datei: 980312235100.idw		Model: 980312235100.iam