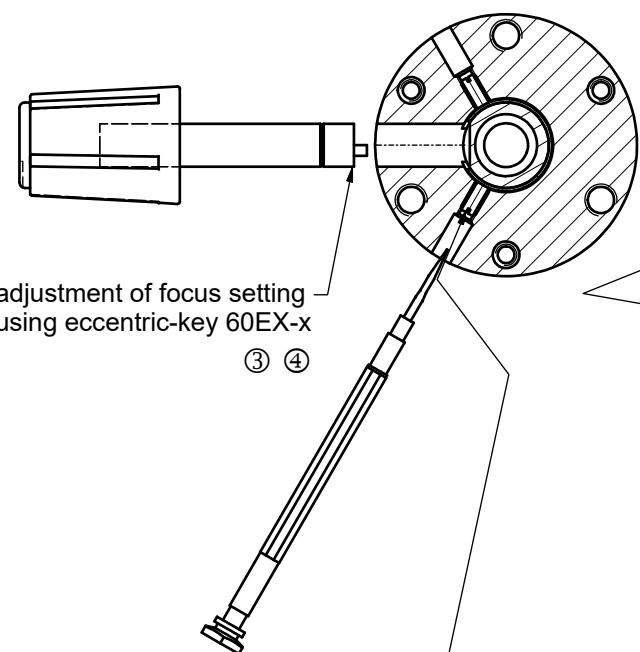
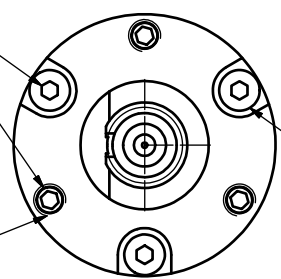


A-A



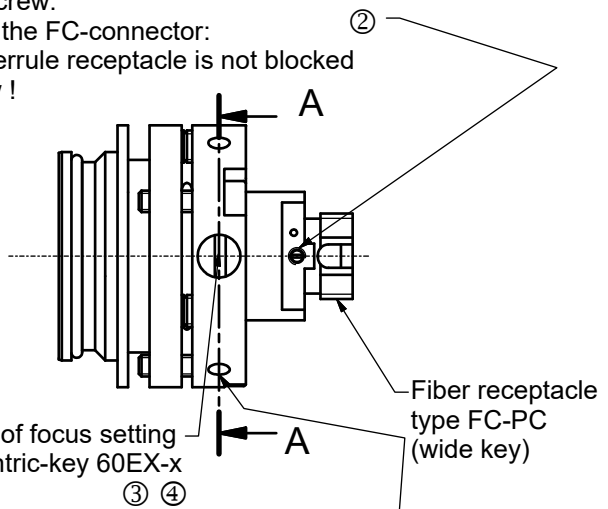
Thrust and tension screw (3x120°) for tilt adjustment with hex key wrench size 1.5mm 50HD-15 ①



Thrust screw M3 max.torque 50Ncm

Tension screw M2 max.torque 40Ncm

! Pin screw for additional locking of the fiber ferrule:
 - before pulling the FC-connector: unlock the pin screw.
 - before inserting the FC-connector: make sure the ferrule receptacle is not blocked by the pin screw !



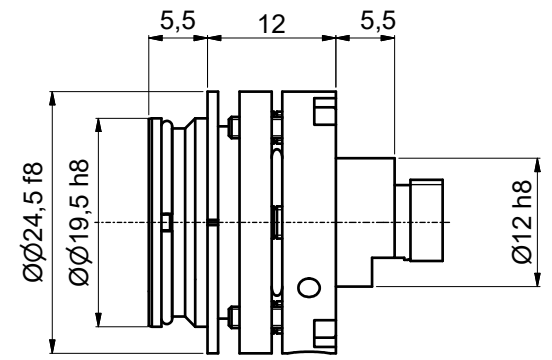
adjustment of focus setting using eccentric-key 60EX-x ③ ④

Fiber receptacle type FC-PC (wide key)

clamp screws for locking optics position (2x120°) using screw-driver size 1.2mm 9D-12 ②

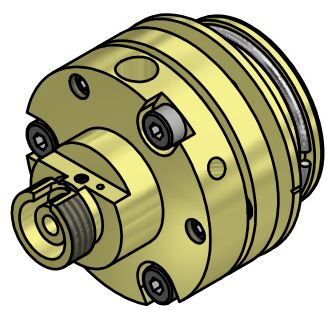
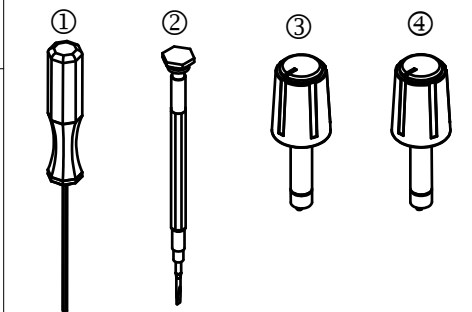
adjustment of focus setting using eccentric-key 60EX-x ③ ④

clamp screws for locking optics position (2x120°) using screw-driver size 1.2mm 9D-12 ②



! Don't touch any other screws !

Tools for assembly and adjustment
 hex-key size 1.5mm 50HD-15
 screw driver size 1.2mm 9D-12
 eccentric-key 60EX-4 focal length ≤11mm
 eccentric-key 60EX-5 focal length >11mm



Allgemeintoleranz ISO 2768 - f		Maßstab: 2:1
Datum 11.05.2016		Name A. Trapp
Gepr.		Norm
60SMS-1-0-XX-xx		Laser beam coupler
60SMS-1-0-XX-xx		60SMS-1-0-XX-xx
Schäfter&Kirchhoff OPTO-SENSORIK UND MESSTECHNIK <small>OPTIK-ENTWICKLUNG/ELEKTRONIK/MESS-TECHNIK/STRALHUNG</small>		Blatt A3
Datei: 010821190200.idw		Blatt 1
Zust.	Änderungen	Datum
Model: 010821190200.iam		