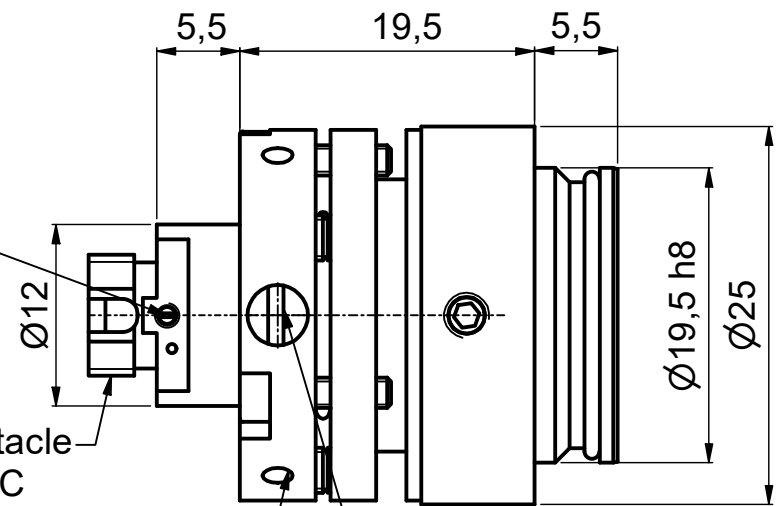


②! Pin screw for additional locking of the fiber ferrule:  
 - before pulling the FC-connector:  
 unlock the pin screw.  
 - before inserting the FC-connector:  
 make sure the ferrule receptacle is not blocked  
 by the pin screw !

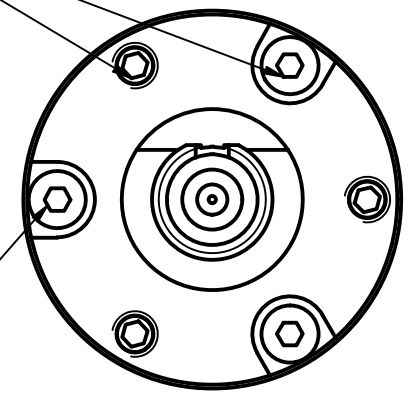


Fiber receptacle  
 type FC-APC  
 (wide key)

clamp screws for locking  
 optics position (2x120°)  
 using screw-driver size 1.2mm  
 9D-12 ②

adjustment of focus setting  
 using eccentric-key 60EX-5 ③

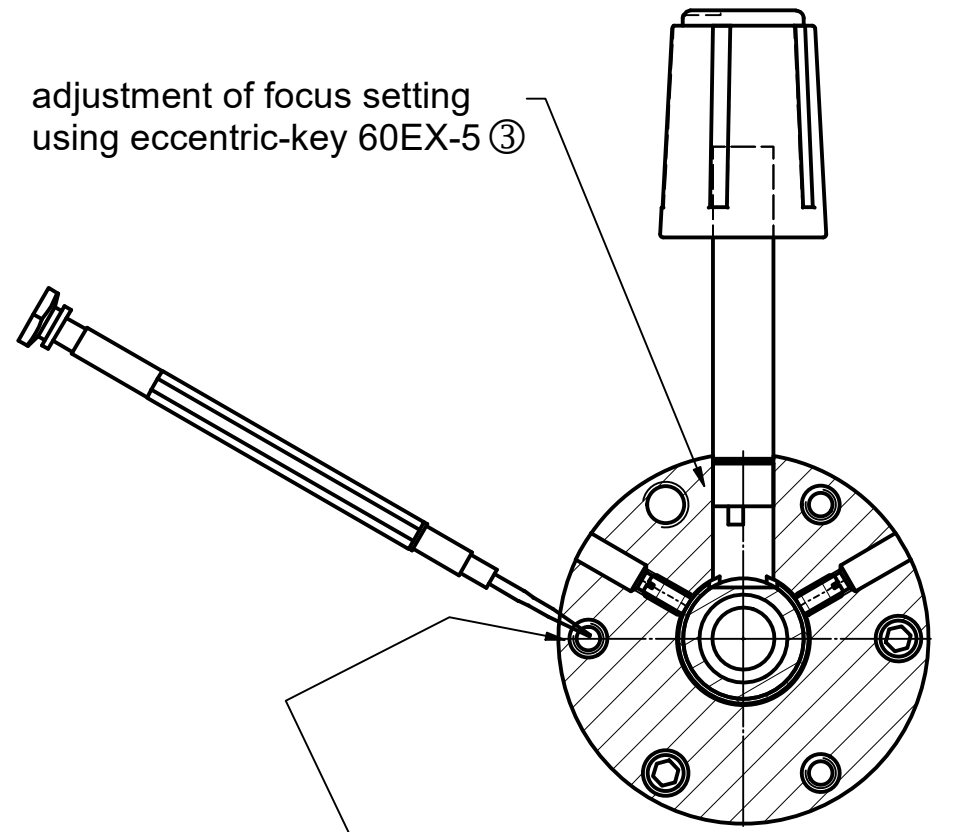
Thrust and tension screw (3x120°)  
 for tilt adjustment  
 with hex key wrench size 1.5mm  
 50HD-15 ①



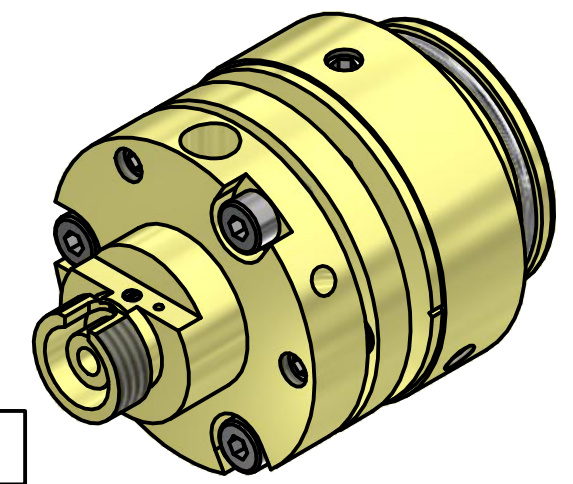
Thrust screw M3 max.torque 50Ncm

Tension screw M2 max.torque 40Ncm

adjustment of focus setting  
 using eccentric-key 60EX-5 ③

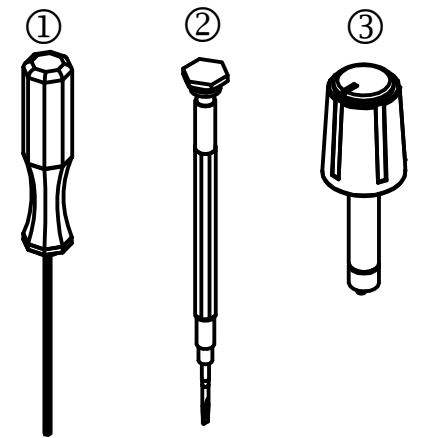


clamp screws  
 for locking optics position (2x120°)  
 using screw-driver size 1.2mm  
 9D-12 ②



**! Don't touch any other screws !**

Tools for assembly and adjustment  
 hex-key size 1.5mm 50HD-15  
 screw driver size 1.2mm 9D-12  
 eccentric-key 60EX-5 focal length



Dimensions DIN EN ISO 14405	Scale: 2:1		60SMS-1-0-xx-xx	
	Laser beam coupler with adapter 60SMS-1-0 with f' greater or equal 18 mm Customer Drawing			
Date		Name		
editor	10.12.2019	Lamott		
exam.				
free				
Schäfter+Kirchhoff OPTICS, METROLOGY, AND PHOTONICS		0108-2119-0500		Size: A3
File: 010821190500.idw		Model: 010821190500.iam		Page: 1