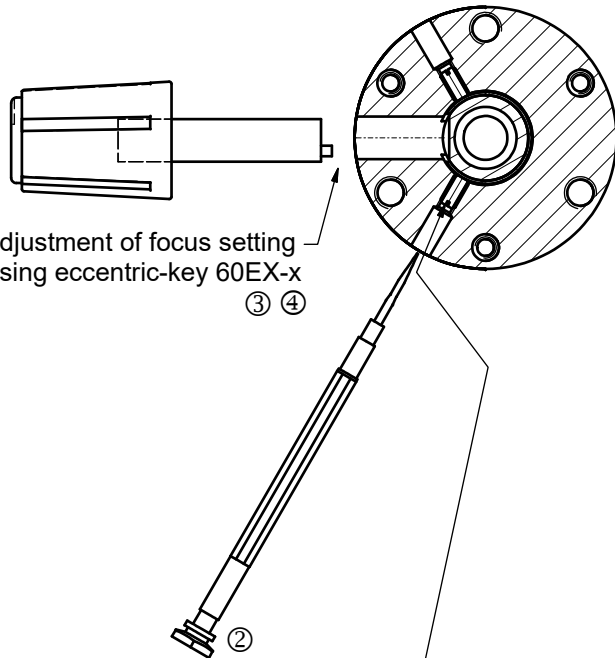


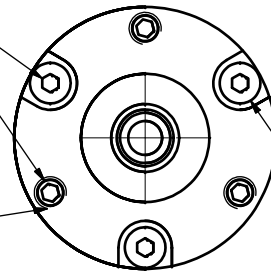
A-A



adjustment of focus setting
using eccentric-key 60EX-x
③ ④

clamp screws
for locking optics position (2x120°)
using screw-driver size 1.2mm
9D-12

Thrust and tension screw (3x120°)
for tilt adjustment
with hex key wrench size 1.5mm
50HD-15 ①

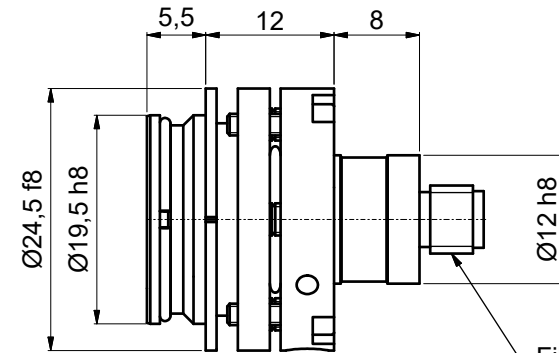


Thrust screw M3 max.torque 50Ncm

Tension screw M2 max.torque 40Ncm

adjustment of focus setting
using eccentric-key 60EX-x
③ ④

clamp screws for locking optics position (2x120°)
using screw-driver size 1.2mm
9D-12 ②

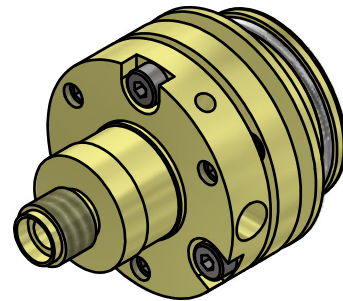


Fiber receptacle
type F-SMA

! Don't touch any other screws !

Tools for assembly and adjustment

hex-key size 1.5mm 50HD-15	screw driver size 1.2mm 9D-12	eccentric-key 60EX-4 focal length ≤11mm	eccentric-key 60EX-5 focal length >11mm
----------------------------------	-------------------------------------	--	--



Allgemein-
toleranz
ISO 2768 - f

Maßstab: 2:1

60SMA-SMA-0-XX-xx

Datum	Name
11.05.2016	A. Trapp
Gepr.	
Norm	

Laser beam coupler

60SMS-SMA-0-XX-xx

Schäfter&Kirchhoff
OPTO-SENSORIK UND MESSTECHNIK
OPTIK-ENTWICKLUNG/ELEKTRONIK/SENSORTECHNIK/OPTEMIK

0108-2119-0100

Blatt

A3

Blatt: 1

Zust.	Änderungen	Datum	Name	Datel: 010821190100.idw	Model: 010821190100.iam
-------	------------	-------	------	-------------------------	-------------------------