

Fiber receptacle  
Type F-SMA 905  
High Power Connector (5° polish)

Do not use

clamp screws for locking optics position (2x120°)  
using screw-driver size 1.2mm 9D-12 ②

adjustment of focus setting  
using eccentric-key 60EX-x ③ ④

Thrust and tension screw (3x120°)  
for tilt adjustment  
with hex key wrench size 1.5mm  
50HD-15 ①





adjustment of focus setting  
using eccentric-key 60EX-x ③ ④

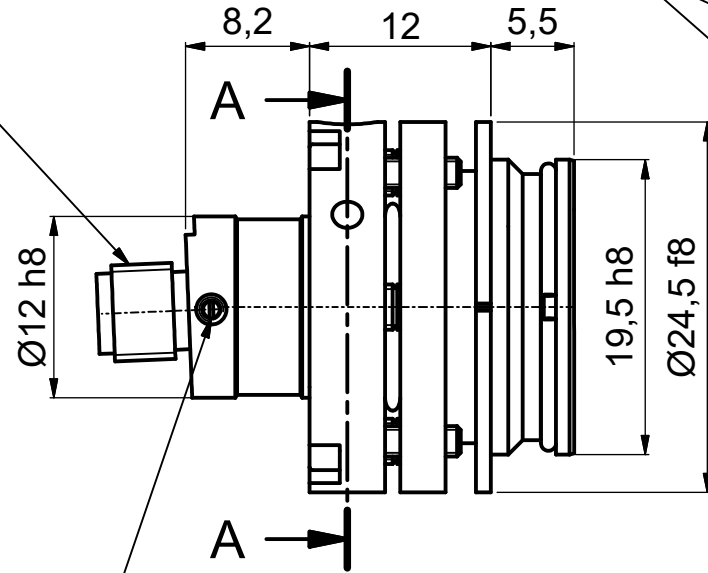
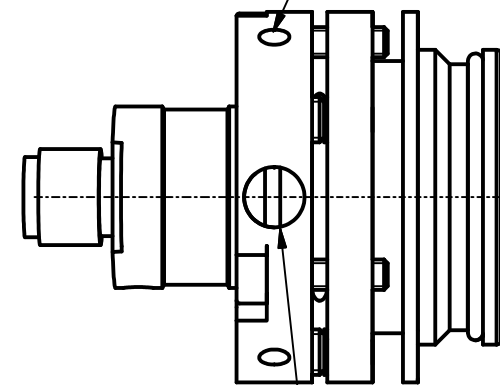
clamp screws  
for locking optics position (2x120°)  
using screw-driver size 1.2mm  
9D-12 ②

Thrust screw M3 max.torque 50Ncm

Tension screw M2 max.torque 40Ncm

Tools for assembly and adjustment

hex-key size 1.5mm 50HD-15	screw driver size 1.2mm 9D-12	eccentric-key 60EX-4 focal length ≤11mm	eccentric-key 60EX-5 focal length >11mm
①	②	③	④
			



! Don't touch any other screws !

For information only  
Not for manufacturing purposes

Dimensions DIN EN ISO 14405	Scale: 2:1		60SMS-SMA-23-XX-xx
	Date: 14.10.2020		
editor			Laser beam coupler
exam.			
free			
Customer Drawing			0108-2119-0600
Schäfter+Kirchhoff OPTICS, METROLOGY, AND PHOTONICS			
File: 010821190600.idw			Model: 010821190600.iam