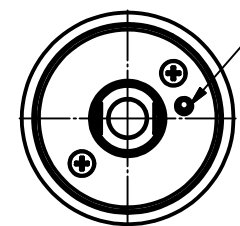
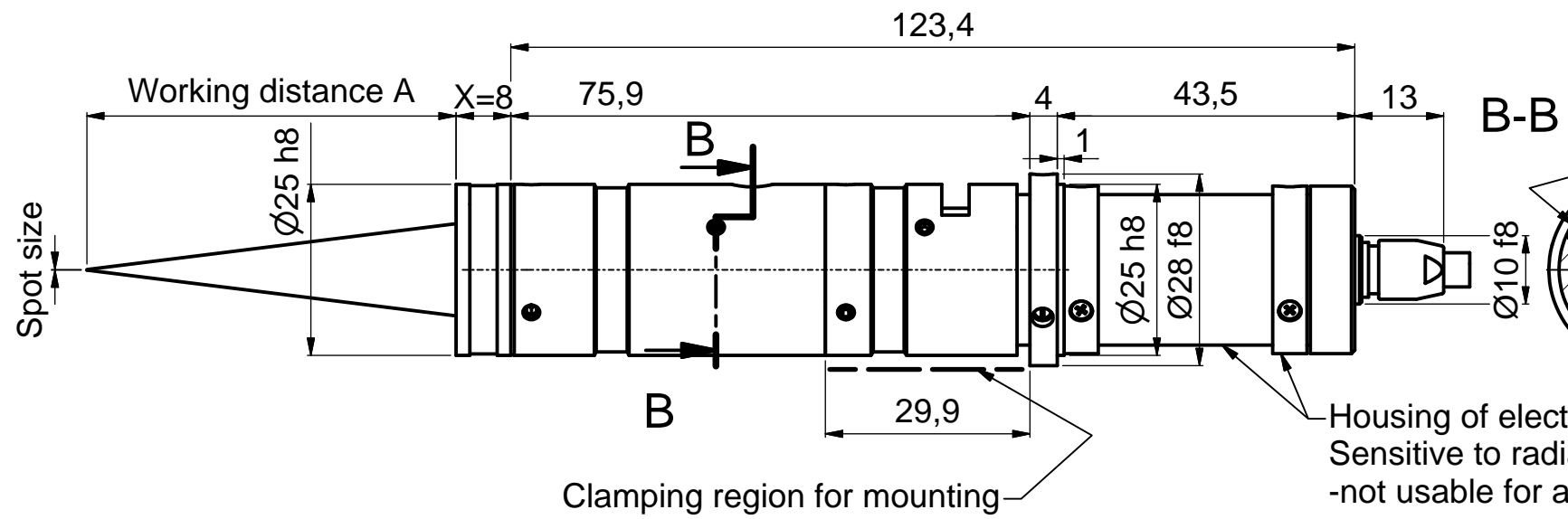
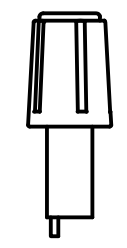


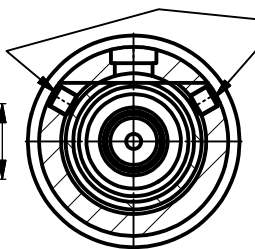
Laser power adjustment, clockwise twist to increase



adjustment of collimation optics using eccentric-key 55EX-5 ②

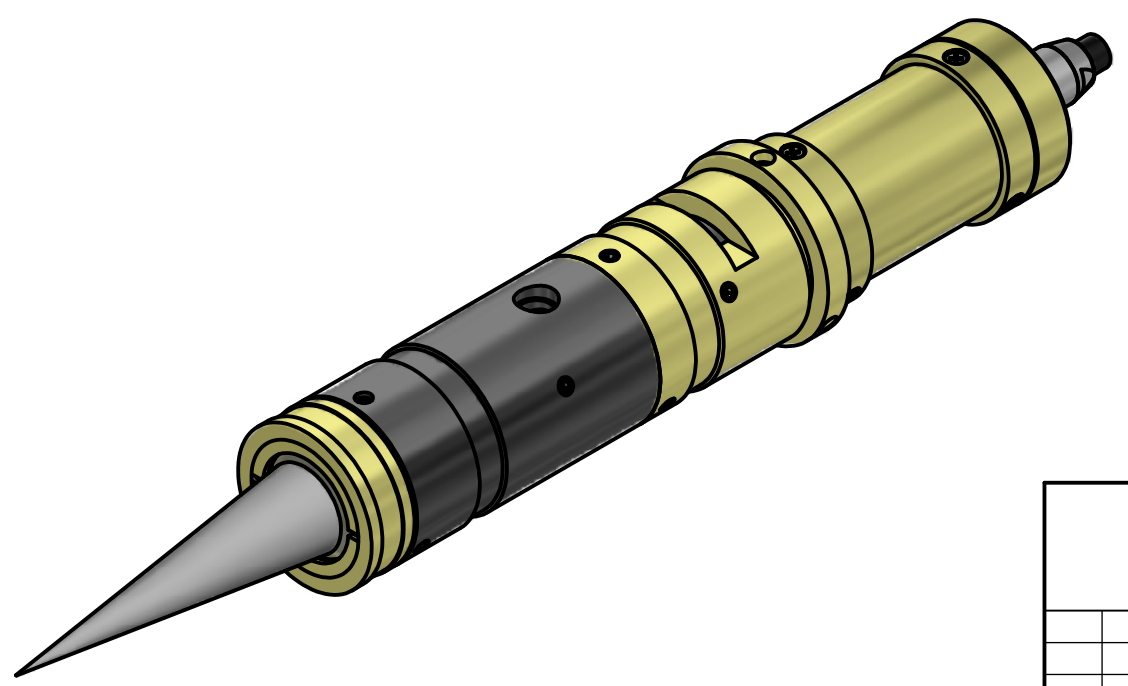


screws for locking optics position (2x120°) using hex-key 50HD-15 ①



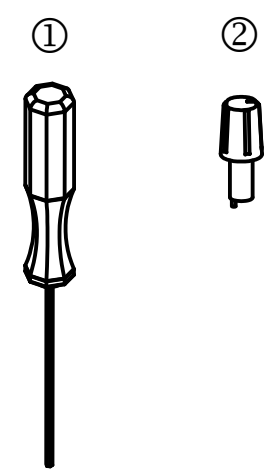
Housing of electronics. Sensitive to radial force -not usable for attachment!

Clamping region for mounting



Tools for assembly and adjustment

hex-key size 1.5mm 50HD-15 ①
eccentric-key 55EX-5 ②



		Allgemeintoleranz ISO 2768 - f	Maßstab: 1:1	
			LNC-13MC + 96CM	
	Datum	Name	LNC-13MC + 96CM X=8	
	Bearb. 27.11.2013	Trapp		
	Gepr.			
	Norm			
			Laser Diode Modules with Low Coherence	
		Schäfter&Kirchhoff OPTO-SENSORIK UND MESSTECHNIK <small>OPTIK-ENTWICKLUNG-ELEKTRONIK-SENSORTECHNIK-SOFTWARE</small>	9304-1200-0122	Blatt A3
			Blatt: 1	
Zust.	Änderungen	Datum	Name	Datei: 930412000122.idw
			Model: 930412000122.iam	