

LASM - Large Area Scan Macroscope

High resolution scanner system



FEATURES

- Monochrome scanner system
- Scan width max. 41 mm
- Resolution 5 μm , 5080 dpi
- High resolution imaging of e.g. ice core samples
- Coaxial directed LED light for bright-field illumination
- Optional: Telecentric lens
- Optional: Direct linear drive
- Optional: Operating temperature down to -40 °C

- Microstructure mapping in polar ice cores
- Interface: GigE
- Modular system



DESCRIPTION

The rapid analysis provided by the Large Area Scan Macroscope with a resolution of 5 μm has proven to be an essential tool for inspecting the microstructures of e.g. ice cores, both in the field and in the laboratory.

Scanner head

Time-consuming inspection using a microscope can be replaced by using the specially developed Large Area Scan Macroscope (LASM) with a monochrome Line Scan Camera. The Large Area Scan Macroscope consists of a Line Scan Camera, a high resolution lens as well as an illumination unit. The sample is imaged in reflection with a resolution of 5 μm (5080 dpi). The measuring width is 41 mm with a maximum scan length of 600 mm.

Bright-field illumination

In order to capture the relevant microstructures, brightfield illumination is used. The light directed at the sample is reflected by surfaces parallel to the sensor. Light reflected from structured areas and edges is reflected away from the sensor and appears dark. For images obtained with this method, as a consequence the grain boundaries appear as dark lines and gas inclusions appear as dark bubbles or spots.

Undisturbed, High Quality Images in Much Less Time

While for the image acquisition technique using a conventional microscope, thousands of images have to be stitched to form a complete picture, only two or three scans are necessary using the Large Area Scan Macroscope depending on sample dimensions. This reduces the imaging time considerably and obviates the alignment and matching of the many individual images of these sections, which requires significant computing time. Since the microscope method takes a long time, for scanning ice cores, all images are additionally taken with slightly different contrast due to the ongoing sublimation process, which also needs to be corrected for. In order to stitch the complete picture, the images also have to be corrected for vignetting and distortion. Using the Large Area Scan Macroscope, a shading correction done prior to scanning allows for evenly illuminated images that also do not show significant signs of distortion due to an excellent correction of the field of curvature. Since only two or three images are necessary to cover the whole sample the time required for stitching is severely reduced.

One of many applications: Ice core inspection

The figure on the right shows the scan of a ice cores sample. The ice core image from 60 m depth shows well defined grain boundaries (dark lines) and pores.

The short time necessary to acquire a complete picture (from >1 h to about 1 – 2 minutes) of an ice core allows for many more samples to be taken during the limited time available in the field, providing a much more detailed picture of the microstructure within the whole ice cores. Due to the short measuring time, many more samples can be measured from one ice core using LASM. Since the image acquisition is so fast, the ice core samples can even be scanned several times to document the sublimation process (for example right after microtoming, and some time later) which is not possible using the microscope technique.

A stratigraphic image that supports dating the ice cores can be obtained using the [Intermediate Layer Core Scanner](#) (ILCS).

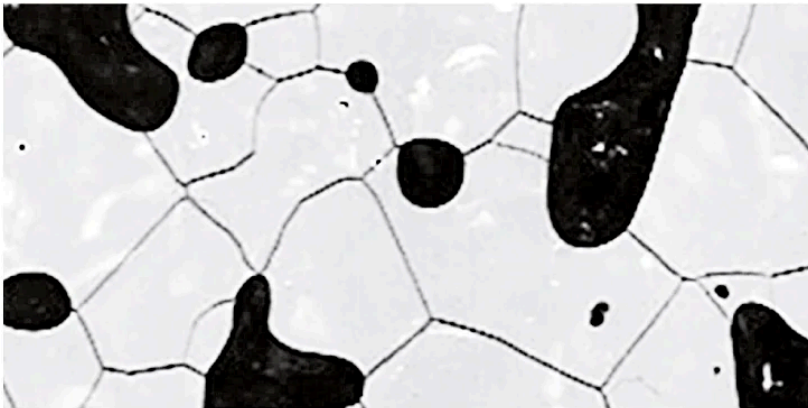
High resolution imaging in harsh environments

As the analysis of the microstructure needs to be done in the field during drilling as well as in the lab, the line scanners developed for analyzing ice cores need to be robust and insensitive to the harsh environment. The components used (mechanical, optical as well as electrical) are designed to work properly at temperatures down to -20°C / -40°C. Mobile scanner systems (like e.g. SK-LASM-41-05-49-J01) are stable and robust enough to endure the long and bumpy ride to and from the drilling site and have been used in the field in Antarctica as well as in Greenland multiple times. Whenever drilling is not ongoing they are used in the lab, e.g. at AWI in Bremerhaven.

More information on microstructure mapping of ice cores can be found on <https://www.awi.de/forschung/geowissenschaften/glaziologie/werkzeuge/microstructure-mapping.html>.

DEEPICE Project

<http://pastglobalchanges.org/science/end-aff/deepice>



ORDER OPTIONS

Order Code	Color	Pixels	Resolution	Scan width	Max. scan length	Illumination	Special feature
SK-LASM-41-05-49-J01	-	8160 pixels	5 µm / pixel, 5080 dpi	41 mm	150 mm	Red, 640nm	
SK-LASM-005-3x41-600	-	8160 pixels	5 µm / pixel, 5080 dpi	41 mm (single scan), up to 100 mm with three scan passes	600 mm	Red, 640nm	Mounted on granite plane

TECHNOTES

- [Line Scan Camera Basics \(10\)](#)
[What are Line Scan Cameras? How do you create an image? etc.](#)
- [What are Line Scan Cameras?](#)
[Introduction and advantages of Line Scan Cameras](#)
- [Creating an image using Line Scan Cameras](#)
[How to create an image, definition of line frequency, and how to improve an image](#)
- [Optical resolution](#)
[Definition and comparison to conventional area cameras](#)
- [Synchronization](#)
[Reasons for synchronization and definition of different synchronization modes](#)
- [Shading correction and white balance](#)
[Why do you need shading correction and how to use white balance](#)
- [Sensor alignment](#)
[How to properly align the line scan camera sensor](#)

[Blooming and Anti-Blooming Correction](#)
[What is blooming and how to correct it](#)

- [Spectral sensitivity](#)
[Spectral sensitivity of different line sensors](#)
- [True color imaging technologies](#)
[Color Calibration of RGB cameras](#)
- [Bright and dark-field illumination](#)
[Details about the different illumination techniques.](#)
- [Setting up a Line Scan Camera](#)
[Evaluation of correct focus](#)
- [Machine Vision Applications of Line Scan Cameras](#)
[Applications of Line Scan Cameras](#)
- [Article - Rapid microstructure analysis of polar ice cores](#)
[Analyzing past climates using the Large Area Scan Microscope.](#)

DOWNLOADS



[Article_IceCoreAnalysis.pdf \(Technote\)](#)

This downloads section only includes general downloads for the complete series.

Please access the individual product pages (using the product configurator, the product list, order options or the search button if you have a complete order code). Here you will find specific downloads including technical drawings or stepfiles.

RELATED PRODUCTS

ILCS INTERMEDIATE LAYER CORE SCANNER	High resolution test system designed for inspecting ice bore samples
SK-LASM-41-05-49-J01	High resolution scanner system
SK-LASM-005-3X41-600	High resolution scanner system

This is a printout of the page

<https://sukhamburg.com/products/linescancamera/scannersystems/microstructuremapping/lasm.html> from 5/10/2024

CONTACT

For more information please contact:

Schäfter + Kirchhoff GmbH

Kieler Str. 212

22525 Hamburg

Germany

Tel: +49 40 85 39 97-0

Fax: +49 40 85 39 97-79

info@sukhamburg.de

www.sukhamburg.com

LEGAL NOTICE

Copyright 2020 Schäfter+Kirchhoff GmbH. All rights reserved.

Text, image, graphic, sound, video and animation files and their arrangement on Schäfter+Kirchhoff GmbH webpages are protected by copyright and other protective laws. The content may not be copied for commercial use or reproduced, modified or used on other websites. [\[more\]](#)